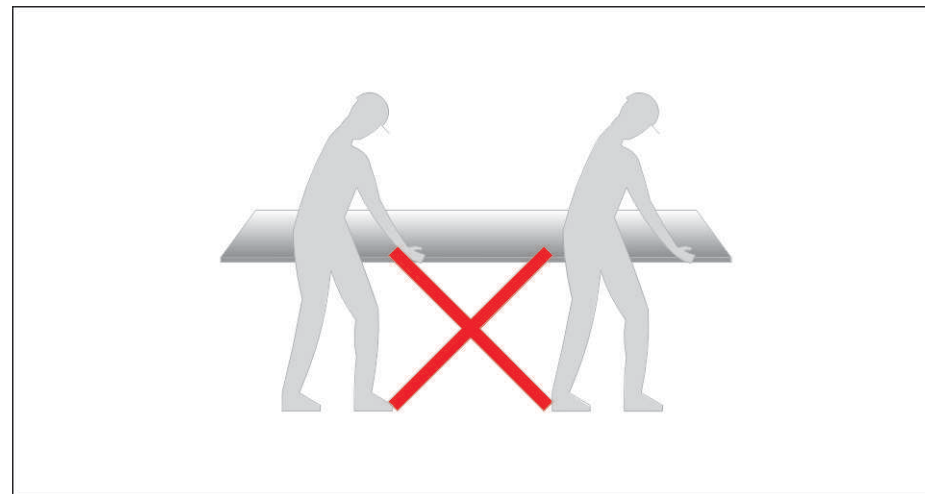
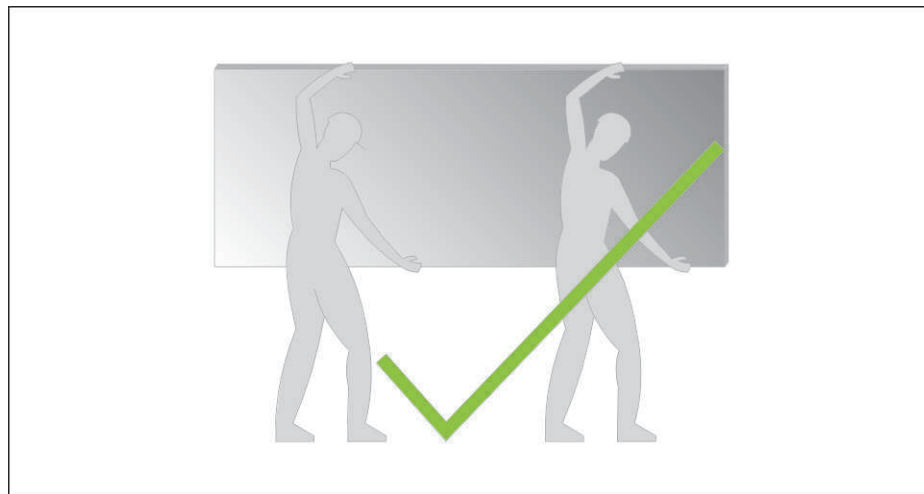
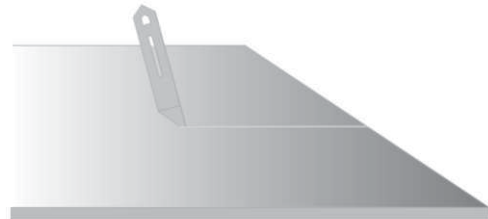


HANDLING AND STORAGE

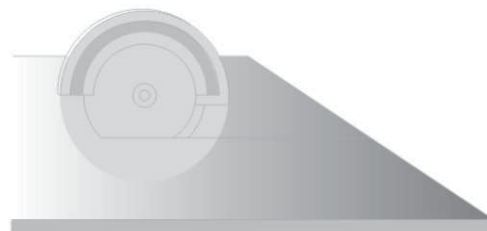


SHEET CUTTING

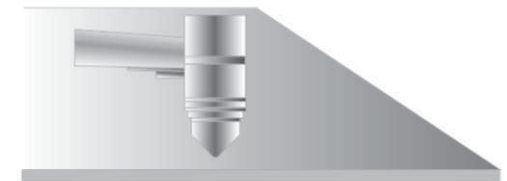
Rough Cutting



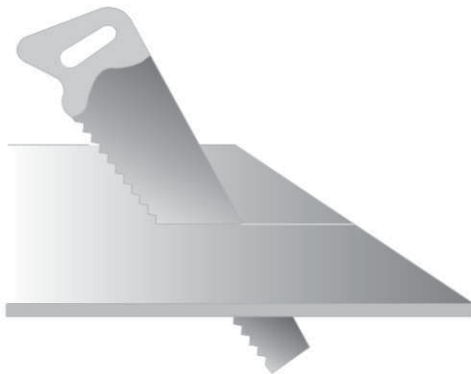
Smooth Cutting



Drilling



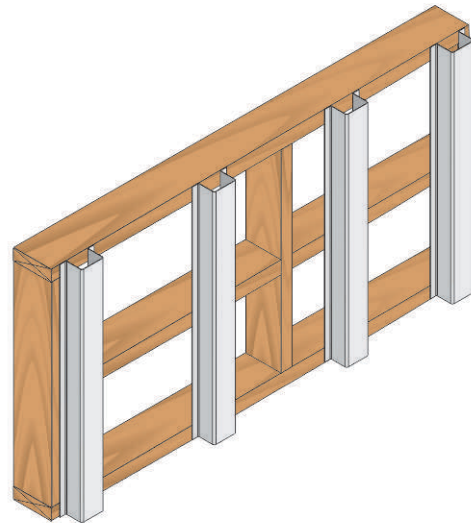
Sawing
and
Planing



FRAMING & FIXING

Batten Fix Example

Position the batten according to predetermined and marked spacing's and ensure that they are vertical (check this with a spirit level in all planes).



Fix the battens on the flat to the frame using appropriate framing nails or screws.

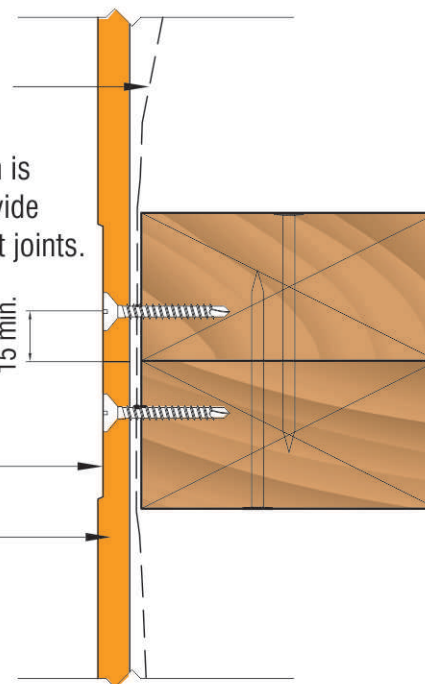
Vapour permeable sarking

Where the stud width is less than 42mm provide double studs at sheet joints.

15 min.

Recessed Edge

Multiboard

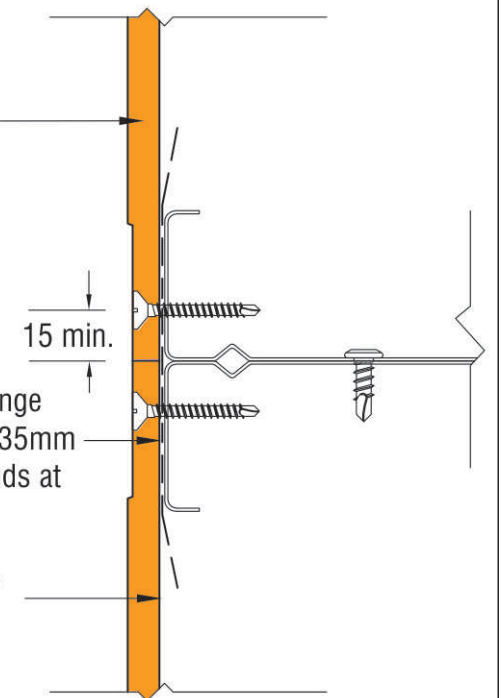


Multiboard

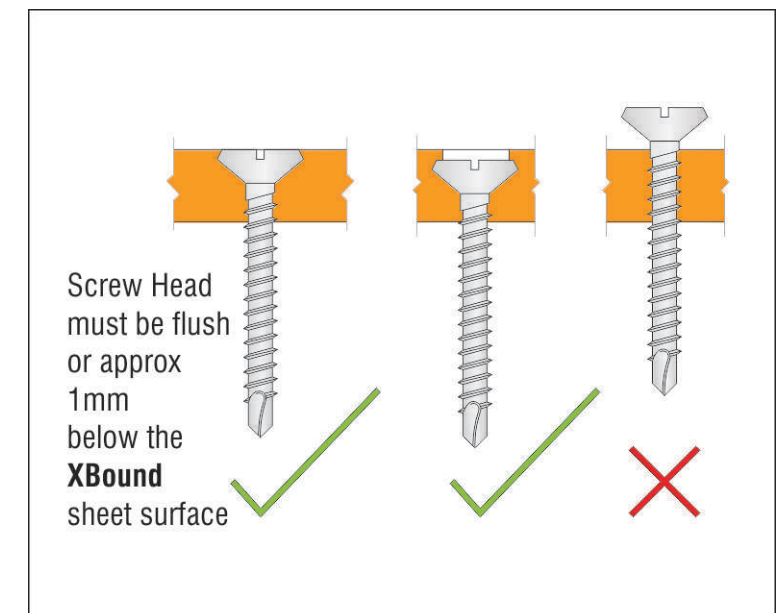
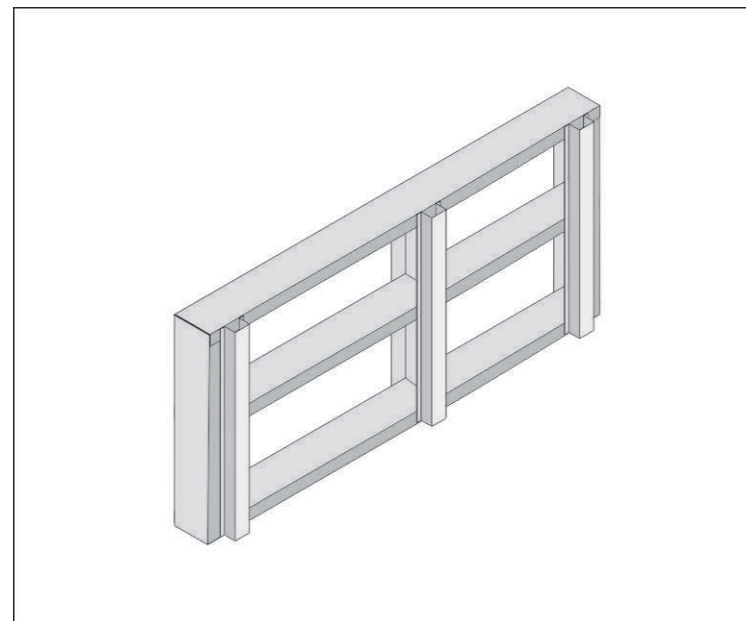
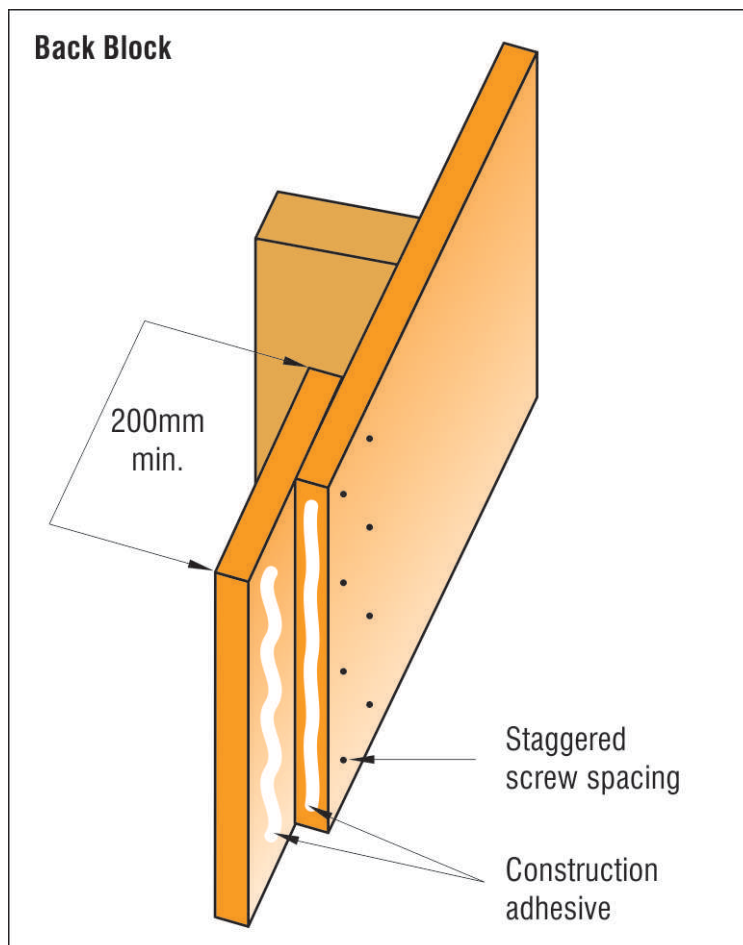
15 min.

Where the stud flange width is less than 35mm provide double studs at sheet joints.

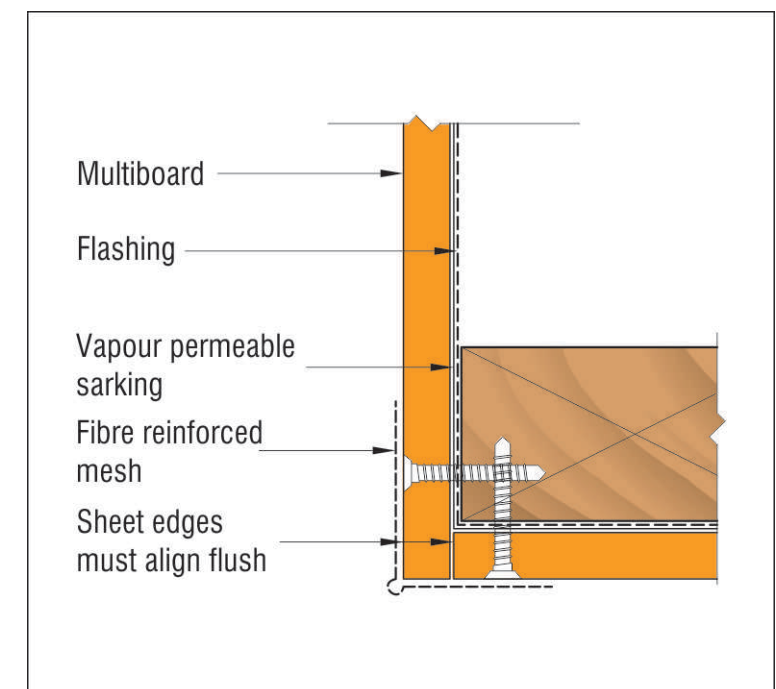
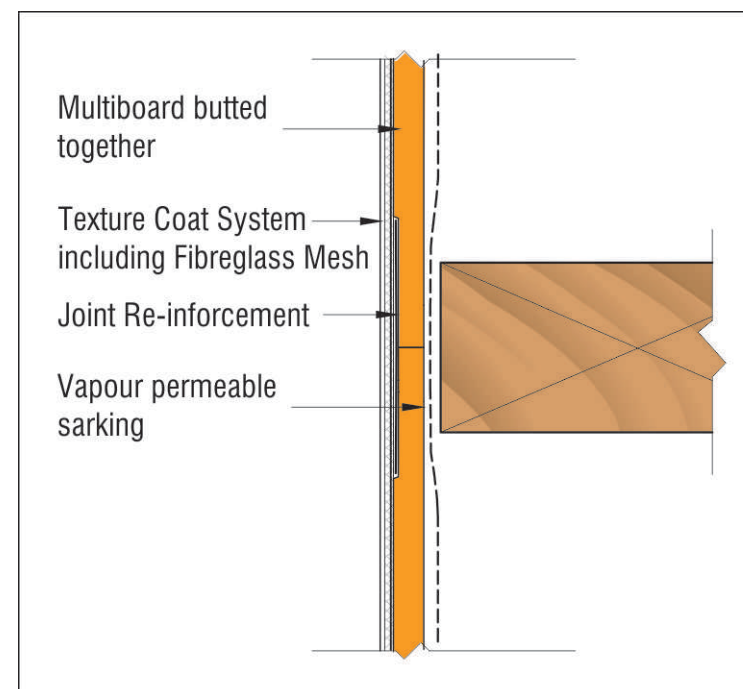
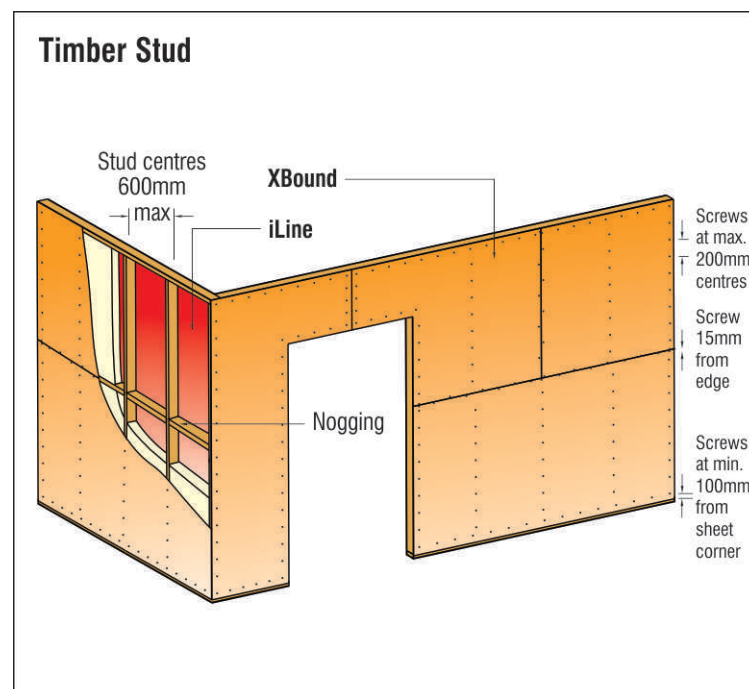
Vapour permeable sarking



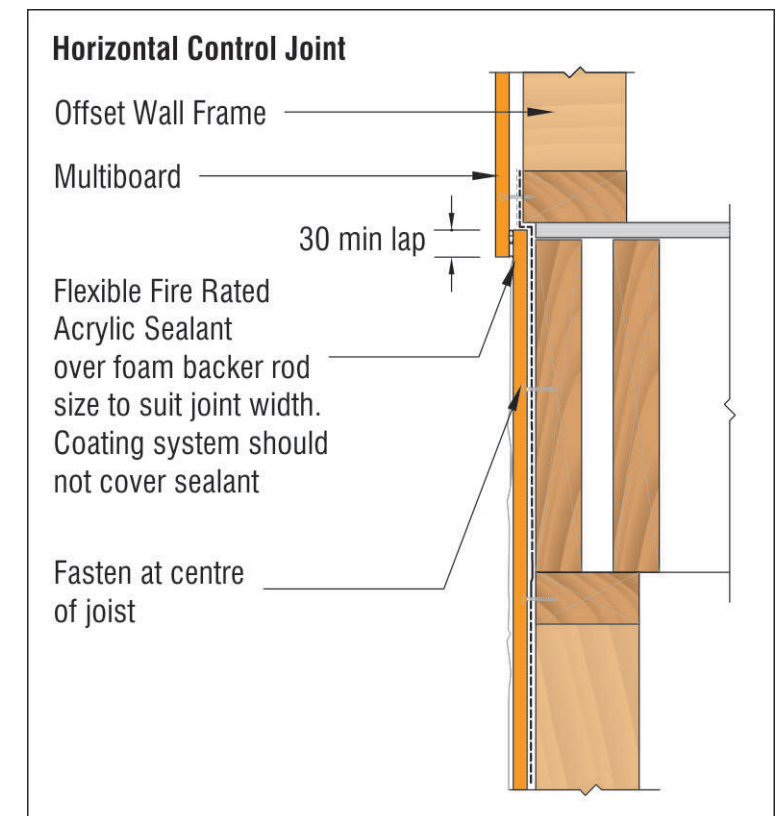
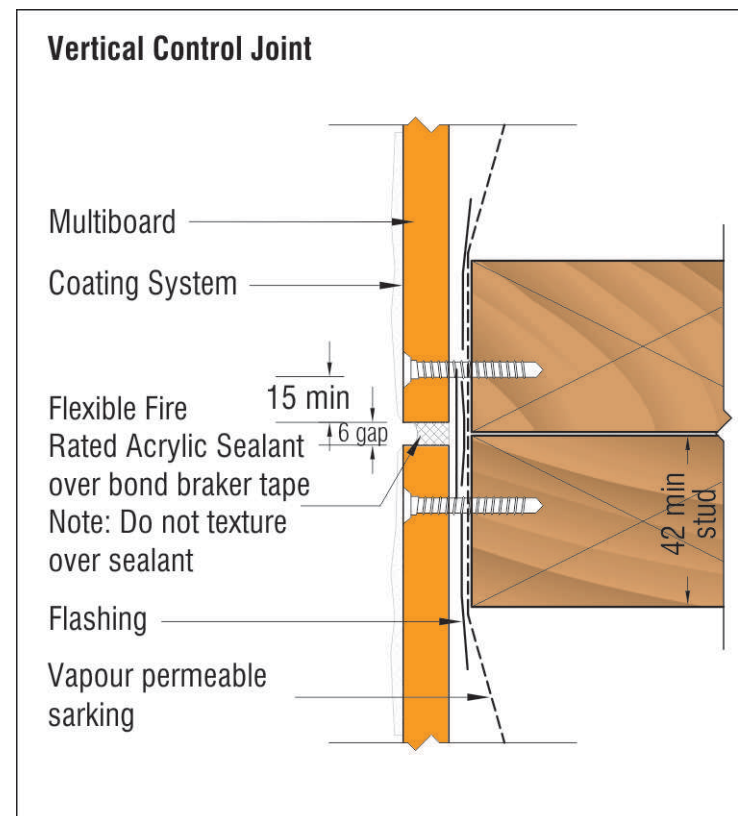
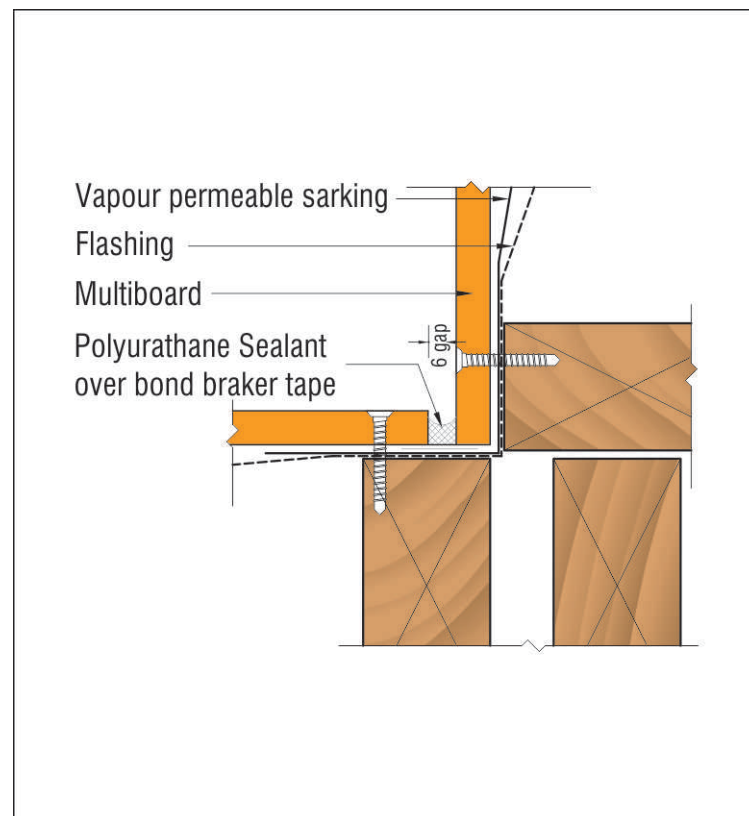
FRAMING & FIXING (cont.)



SHEET LAYOUT & INSTALLATION



SHEET LAYOUT & INSTALLATION (cont.)



SHEET LAYOUT & INSTALLATION (cont.)

